



American Owned
and operated
Est. Since 2001



ABOUT US

Natural stone veneer was established in 2001, in United states creating the idea of thin stone to replace a full size modular stone, without jeopardizing the original look and the integrity of design



Our product is a dolomitic limestone that has been tested and certified to meet the highest architectural specification. The highest stone density allows us to cut it thinner, and minimize the weight for special project needs.

Since the beginning of natural stone veneer, we have been using the same twenty colors, which are continually available at all times. This allows clients to add on to their exiting projects, even after many years.

We dropship directly to your project worldwide, meeting your schedules and deadlines. You can job pack in one or multiple containers variation of products which are delivered to your site.



USA WAREHOUSE & FACTORY

Our factory is equipped with the latest advanced machinery and our craftsman, who are skilled in the art of artisanary, can fabricate any product related to natural stone.

From wall cladding with all textures to flooring in all finishes and cut to size, mosaic, sculptures, fountains, vases, columns, bathtubs, sinks, vanity tops and bathroom accessories. Fabrication is established per your needs, desires and imagination.



Over twenty years in business has allowed us to experience a superior customer service under American standards, to cater to architects, designers, developers as well as homeowners. Our hundred and twenty employees placed in several countries, speaking multiple languages, are giving our clients service they expect. We thrive on helping to make your dream project come to a completion without any glitch. Customer service is our number one priority.



2000 East Maule Ave. Las Vegas, NV 89119 | +1 702.558.7774 |
www.NaturalStoneVeneer.com | contact@naturalstoneveneer.com

PRESS COVERAGE

1

"Building a handcrafted stone business"

by Jennifer Adams

Edgard Sargi, president of ImExWare in Henderson, NV, journeyed to Indonesia several years ago with a specific objective in mind. "I realized that they have nice marble, and also reasonable labor cost there," he explained. "I went to get into something different than general construction, which I had been doing. I was a general contractor in Las Vegas." And after observing local practices in Indonesia, Sargi returned to the U.S. with thoughts of launching a business to produce split-faced stone products.

"I noticed that for a lot of things, (Indonesians) rely on their hands -- to make furniture and other handcrafted things," he said. "I went to a trade show there, and after I came back, I thought about the idea of doing split-faced stone, because I know how to do this kind of work."

Once Sargi was convinced of his idea, he returned to Indonesia to begin hunting for a company to manufacture the products. "I went back to Indonesia, but couldn't find anybody that had the technique to do this kind of work and make it for me," he said. "I waited about six months, and then went ahead and started my own factory."

It was three years ago when Sargi set out on this mission. "I brought technicians from Europe, and spent six months building the factory and training people to split the stone," he said. While in Indonesia, I went around to all different islands and found quarries with different colors. We offer 18 colors in all."

Sargi explained that he purchases materials from these quarries, and then fabricates the products at his facility, which sits on 5 acres. The factory is equipped with everything from hand tools to advanced machinery, according to Sargi. "We do split-face, bushhammered and polished stone finishes as well as mosaics and ledged stone, which is with 2-inch random length pieces set on mesh," he said. "The bottom line is that we can fabricate anything the customer wants. Custom orders aren't a problem. We can do any size."

The company, which began with 60 employees, has now grown to include 120 with a capacity of 10 containers a month, and markets its products to regions throughout the U.S. ImExWare maintains a showroom and warehouse in Henderson, NV, where it keeps a total of 60 containers in stock. The company offers interior and exterior products for both residential and commercial design.

"We are planning to go worldwide," said Sargi. "We are setting up exclusive dealers for tile. We just signed a deal with Dal-Tile in San Francisco, and are looking for exclusive dealers all over the U.S."



Managing Member : Edgard Sargi

Stone World Magazine, April 2004 Issue, pg. 248
Jennifer Adams is the managing editors of Stone World.

Bank upgrade relies on ashlar stonework

Using an alternating pattern of thin-cut black and Sand Beige limestone veneer, as well as granite elements, RPR Architects established a unique setting for the Alta Alliance Bank in Oakland, CA

by Michelle Stinnard



The facade of the 13,000-square-foot Alta Alliance Bank headquarters building, located in Downtown Oakland, CA, features alternating stripes of black and Sand Beige dolomitic limestone in an ashlar pattern, which was added to update the look of the exterior facade.

Located in Downtown Oakland, CA, the facade of the 13,000-square-foot building that now houses the Alta Alliance Bank headquarters was in dire need of a facelift, and locally based RPR Architects came to the rescue in a timely manner. To enhance the outdated look of the exterior space, the architects added a variety of limestone and granite to the exterior facade of the building, and stone was also carried inside.

According to Design Principal Michael Perkocho, AIA of RPR Architects, the building was originally constructed in the 1950s, and remodeled in the 1970s. "The intent was to create a signature building for Alta Alliance Bank," he said. "We wanted to give it a fresh contemporary look to attract customers and high-caliber employees."

The exterior facade of the building features alternating stripes of black and Sand Beige dolomitic limestone -

which was quarried in Indonesia - in a combination of bushhammered and split-faced finishes. The material was supplied by Im Ex Ware of Henderson, NV, and distributed by Dal-Tile Corp. of San Leandro, CA.

RPR Architects considered a number of stone finishes before ultimately selecting a combination of bushhammered and split-faced. "We wanted something very eye-catching in terms of colors," said the architect. "The bushhammered and split-faced finishes



(Before)



According to Design Principal Michael Perkocha, AIA of RPR Architects, the biggest challenge was in applying the stone veneer to an existing building with multiple substrates.

are appealing for aesthetic reasons and are also less attractive to graffiti due to their very coarse textures. Stone was the right choice for the bank, as it made it seem solid and substantial.

"We knew we wanted a material that was contemporary but also distinctive - the image of the shiny granite corporate bank wasn't right for Alta Alliance as a community-based bank," the architect continued. "The limestone, in combination with the signature yellow metal canopy and fascia, had the right mix of warmth, solidity and brilliance."

The pattern features a variety of random sizes that are 8 inches tall and anywhere from 4 to 24 inches wide. The stone was laid in an ashlar pattern and features pieces that are mainly 3/8 inches thick, although the split-faced material tends to be thicker at the edges of the building, according to Perkocha. "The stone was sealed with ProSoCo Limestone and Marble Protector to sharpen the contrast and enhance the color and

veining of the natural stone veneer, while aiding with maintaining the crispness of the design," he said. Perkocha also added that the exposed corners of the stone were all mitered, which he felt was a fairly unique aspect of the project.

Additionally, the base of the building is comprised of Absolute Black granite, which was also distributed by Dal-Tile Corp. The bottom 2 feet of the facade features 18- x 18-inch pieces of granite, while smaller 6- x 6-inch pieces were used around the automated teller area of the bank.

Installing the stone

According to the architect, the biggest challenge was in applying the stone veneer to an existing building with multiple substrates. "In some areas, we had to apply the veneer to a brick wall, and in other areas to a steel framing," he said. "Another challenge was that with the ashlar pattern and random sizes of the

stone, the material had to be laid up using some artistic interpretation on the part of the masons. The stone had to be carefully aligned so it maintained the random appearance of ashlar masonry.

"The General Contractor, South Bay Construction, coordinated the subcontractors on the job to assure De Anza Tile with access and a properly prepared substrate for the application of the random-length course stone," Perkocha continued.

According to Rich Papapietro of De Anza Co., Inc. Tile of Palo Alto, CA, the stone work took approximately one month to install, with a total of four workers on the job. Using Megalite® Crack Prevention Mortar from Custom Building Products, the workers were able to adhere the stone panels to the facade of the building. "The lightweight product has a bond on it that is incredible," said Papapietro.

The installer agreed with Perkocha that the different surfaces on the



Due to the ashlar pattern and random sizes of the stone, the material had to be laid up using some artistic interpretation on the part of the masons, according to the architect. "The stone had to be carefully aligned so it maintained the random appearance of ashlar masonry," he added.

"The stone was sealed with ProSoCo Limestone and Marble Protector to sharpen the contrast and enhanced the color and veining of the natural stone veneer while aiding with maintaining the crispness of the design," the architect said.



The exterior limestone features a combination of bushhammered and split-faced finishes.

building posed a challenge when it came time to install the stone. "It was difficult going over all the different surfaces to try and achieve a level plane," he said "The material was feathered out in some places by the stucco workers and so forth which helped overcome this." All the prep work paid off because the final monolithic appearance of the stone walls is exactly what the architect envisioned.

Natural stone was also carried inside the building, as slabs of Absolute Black granite were used for bathroom and kitchen countertops. This met the owner's request that the interiors would be "warm and inviting, with an upscale comfortable atmosphere." "We wanted

to carry through the feeling of elegance and permanence that greets customers on the exterior," the architect added.

The project was carried out in a timely manner, taking only six months to complete from start to finish. Finishing in January 2007, the project was very well received, according to the

architect. "The project was done with some assistance from the Community and Economic Development Agency (CEDA) of Oakland," he said. "Brian Kendall, the city's project manager, said this bank is one of the most successful projects they have ever had in terms of the facade improvement program." q

Alta Alliance Bank Oakland, CA

Architect : RPR Architects, Oakland, CA

General Contractor : South Bay Construction, Los Gatos, CA

Stone Installer : De Anza Tile Co., Inc., Palo Alto, CA

Stone Supplier : Im Ex Ware, Henderson, NV (limestone)

Stone Distributor : Dal-Tile Corp., San Leandro, CA (limestone, granite)

Installation Products : Custom Building Products, Seal Beach, CA

Reprinted with permission from Stone World April 12, 2007

TABLE OF CONTENTS

ABOUT US	2
----------	---

USA WAREHOUSE & FACTORY	3
-------------------------	---

PRESS COVERAGE	4-7
----------------	-----

CUSTOM FABRICATION	9
--------------------	---

Above our ideas you can adjust and customize to your taste and needs

TEXTURED FINISH	10-35
-----------------	-------

Biscotti	12-15	Sienna	21
Ledge Stone	16-17	Stacked Stone	22-25
Rocky Mountain	18-19	Split Face	26-27
Rocky Mountain Tumbled	20	Tuscan Ashlar	28-31

TILES & SLABS	32-59
---------------	-------

Blade	34	Rough Sawn & Sand Blasted	52
Bush Hammer	35-36	Scored Horizontal 1cm	53
Canvas	37	Scored Horizontal Skip Vertical 1cm	53
Combed	38-40	Scored Horizontal Vertical 1cm	53
Combed Soft	41	Scored	54-55
Honed & Polished	42-43	Scored Chisel 3/4	56
Leathered & Brushed	44-47	Scored Chisel 3mm	56
Parquet	48-49	Scored full chisel	56
Paso 1.5mm	50	Scored skip chisel 3mm	58
Paso 2.5mm	51	Scored uniform skip chisel	58
		Segmented	59

POOL & LANDSCAPE	60-68
------------------	-------

Mosaic	62-63	Water Features	66-67
Coping, Wall Caps & Wainscot	64-65	Lighting / speakers cover	68

BATHROOMS	69-71
-----------	-------

TECHNICAL INFORMATION	72-79
-----------------------	-------

CUSTOM FABRICATION



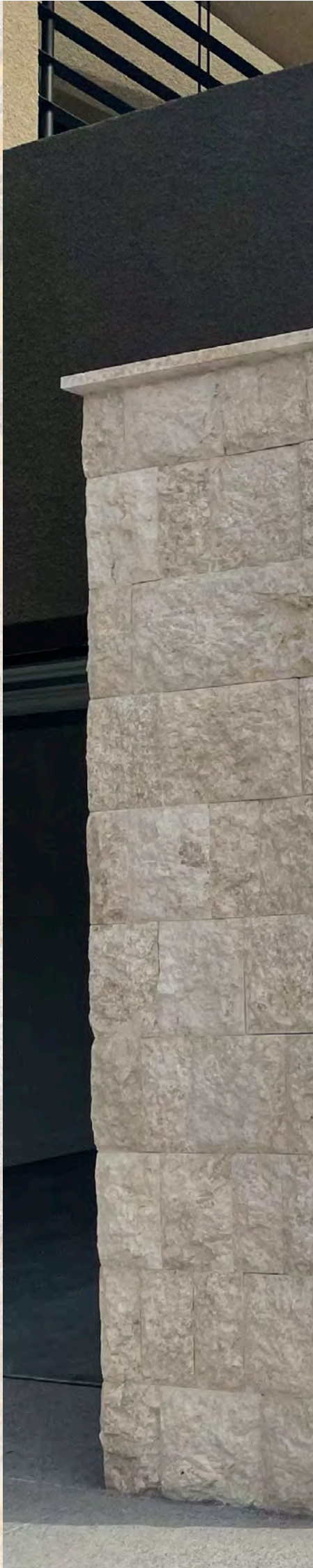
Natural Stone Veneer by Imexware has been fabricating **stone products** for over 20 years. We create custom masterpieces with your choice of Natural Stone. **Available in a variety of colors and visual textures.**

We will custom fabricate your design for a modern appeal or a classic look. With us, you have the capability to make your desired space an eye-catching opportunity. **If you can imagine it, we can create it!**

Everything will be **personalized, custom-made and CUT TO SIZE** in order to meet all your specifications. We can make your commercial or residential project unique and masterful.



TEXTURED FINISH





*Split Face - Baltic
Exterior Walls*

BISCOTTI



Adam Blue

24x6"x 3/ 8"
panel with 1-1/ 4" pieces, glued together
creating an interlocking basket woven
biscotti look.
Note: corners are available in all colors



Black



Desert Sand



Brownny



Hazelnut



Baja Sand



Oyster Shell

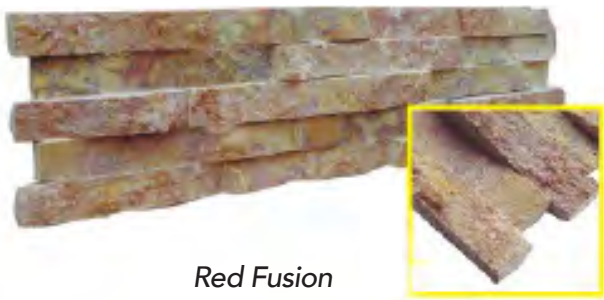
TEXTURED FINISH



Mocha Latte



Mocha Almond



Red Fusion



Sand Beige



Chocolate Swirl



Oyster Gray

CORNER



Chocolate Swirl



Mocha Almond



*Biscotti / Mocha Almond
Vertical lay*



*Biscotti / Mocha Almond
Horizontal lay*



Biscotti / Hazelnut

You can choose from our many mixtures of colors available in stock to make up your own combination.



Biscotti / Chocolate Swirl



Biscotti / Brown

LEDGE STONE



Almond



Adam Blue



Baltic



Black



Brownly



Oyster Gray



Red Camel



Sand beige

CORNER

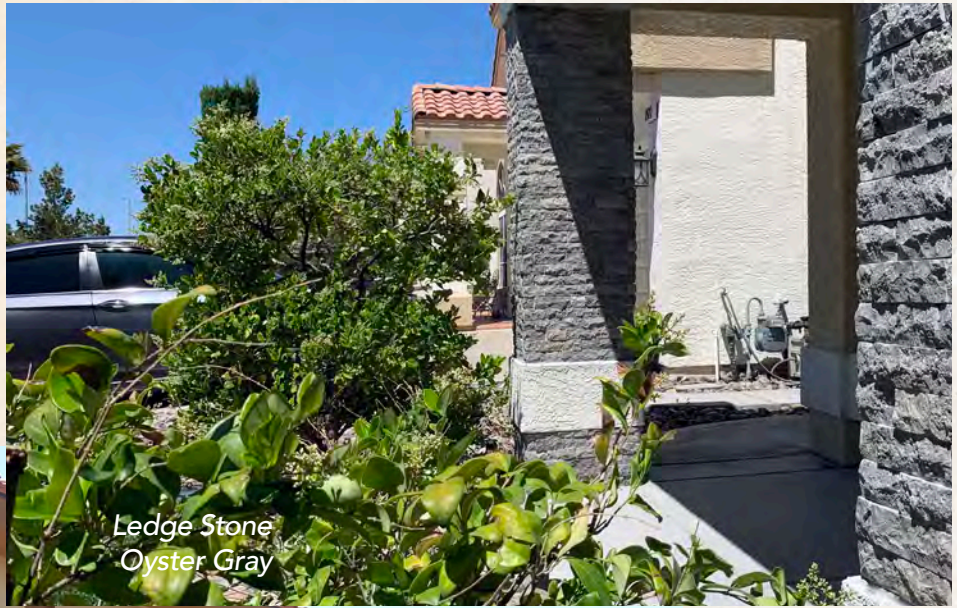


Creamy Peach Horizontal corner



Creamy Peach Vertical corner

TEXTURED FINISH



Ledge Stone
Oyster Gray



Ledge Stone
Red Camel

2" x random chiseled face pieces, glued and interlocked together creating a solid panel.

Note: corners are available in all colors



Ledge Stone
Brown

ROCKY MOUNTAIN



Adam Blue



Brownly



Black



Desert Sand



Chocolate Swirl



Oyster Gray



Mocha Latte

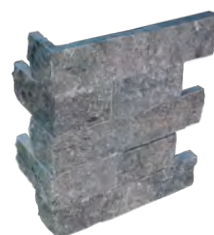


Sand Beige

CORNER

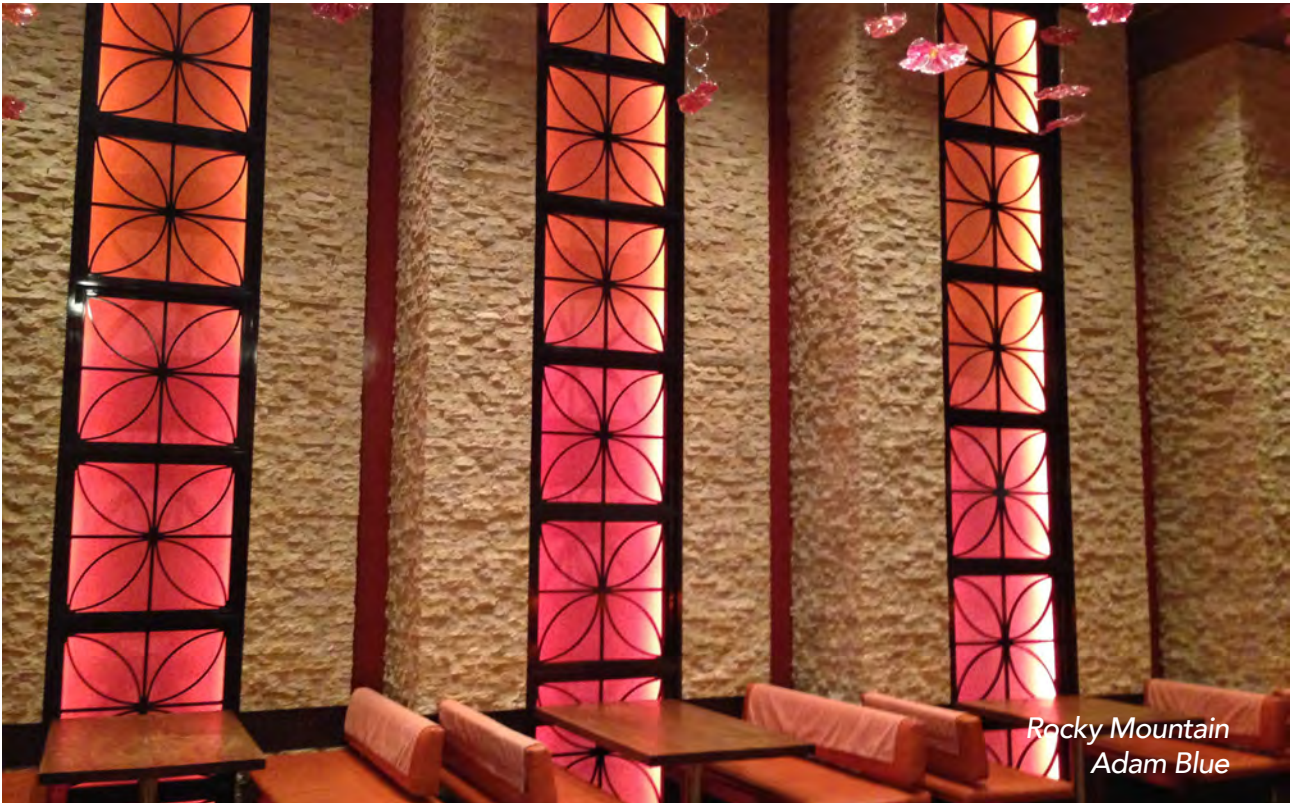


Sand Beige



Oyster Gray

TEXTURED FINISH



Rocky Mountain
Adam Blue



Rocky Mountain
Mocha Latte

2 1/4" high chiseled face pieces
by random length glued together
creating an individual 24"x12" solid panel

Note: corners are available in all colors



Rocky Mountain
Adam Blue

ROCKY MOUNTAIN TUMBLED



Adam Blue



Brownny



Black



Mocha Latte



Desert Sand



Sand Beige



Oyster Gray

2 "1/4 high gtumbled face pieces by random length glued together creating an individual 24"x12"solid panel

Note: corners are available in all colors

CORNER



Sand Beige



Adam Blue

TEXTURED FINISH

SIENNA



Adam Blue



Browny



Baja Sand



Black



Mocha Latte



Mocha Almond



Oyster Shell



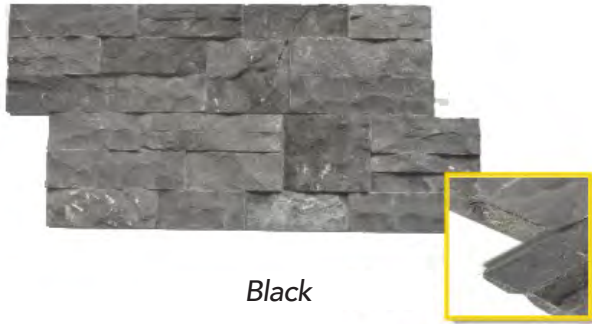
Oyster Gray



Sand Beige

6"x24" or 8"x36"
stone pieces
glued together creating
an interlocking solid panel

STACKED STONE



Black



Brownny



Creamy Chocolate



Red Camel



Hazelnut



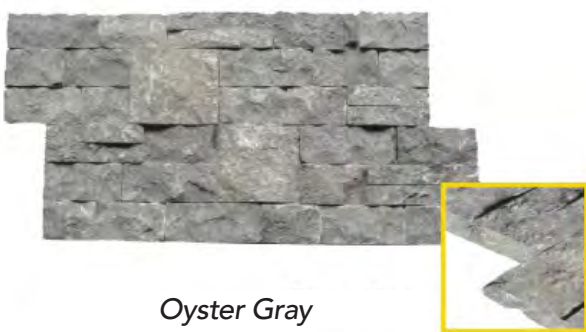
Mocha Almond



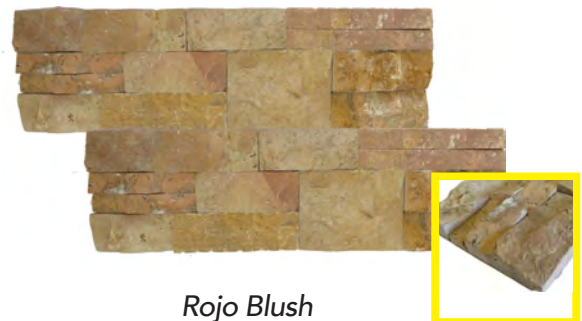
Mocha Latte



Oyster Shell



Oyster Gray



Rojo Blush

TEXTURED FINISH

CORNER

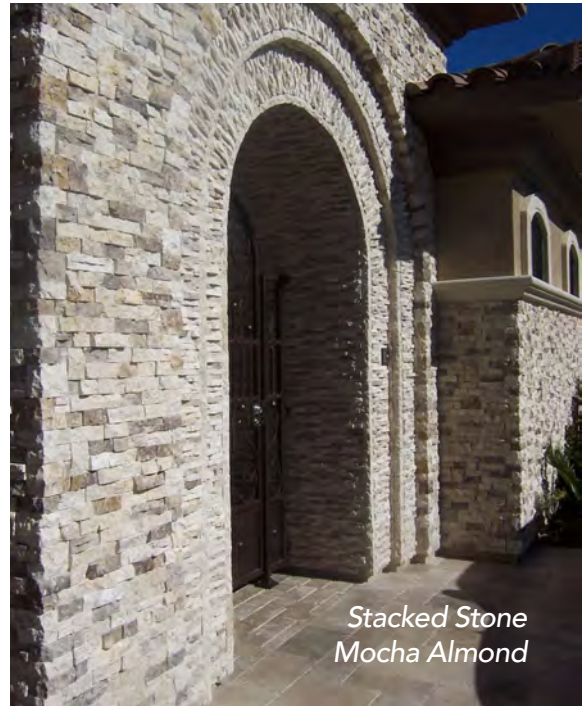


Hazelnut



Oyster Gray

Note: corners are available in all colors



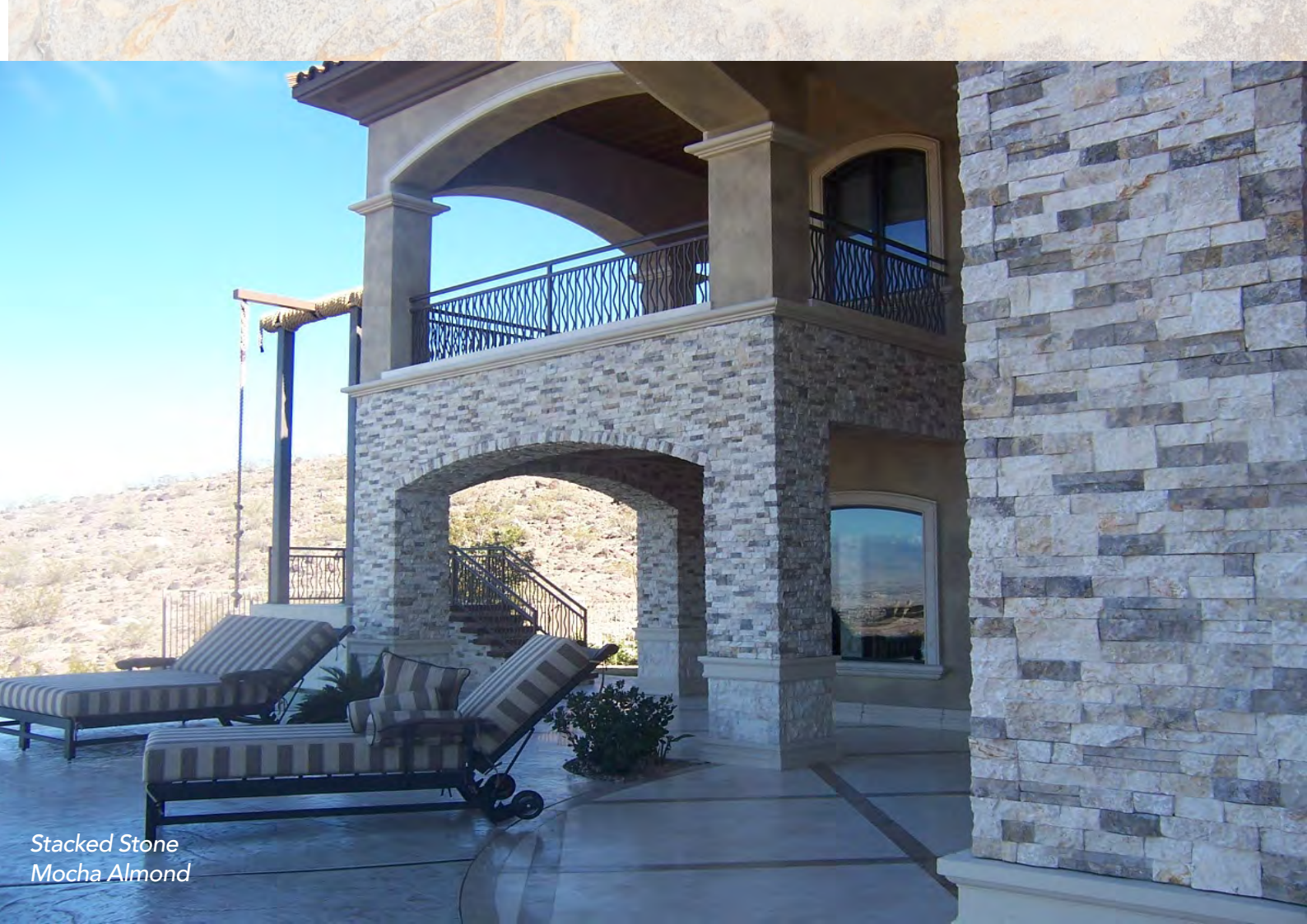
Stacked Stone
Mocha Almond



Stacked Stone
Oyster Gray



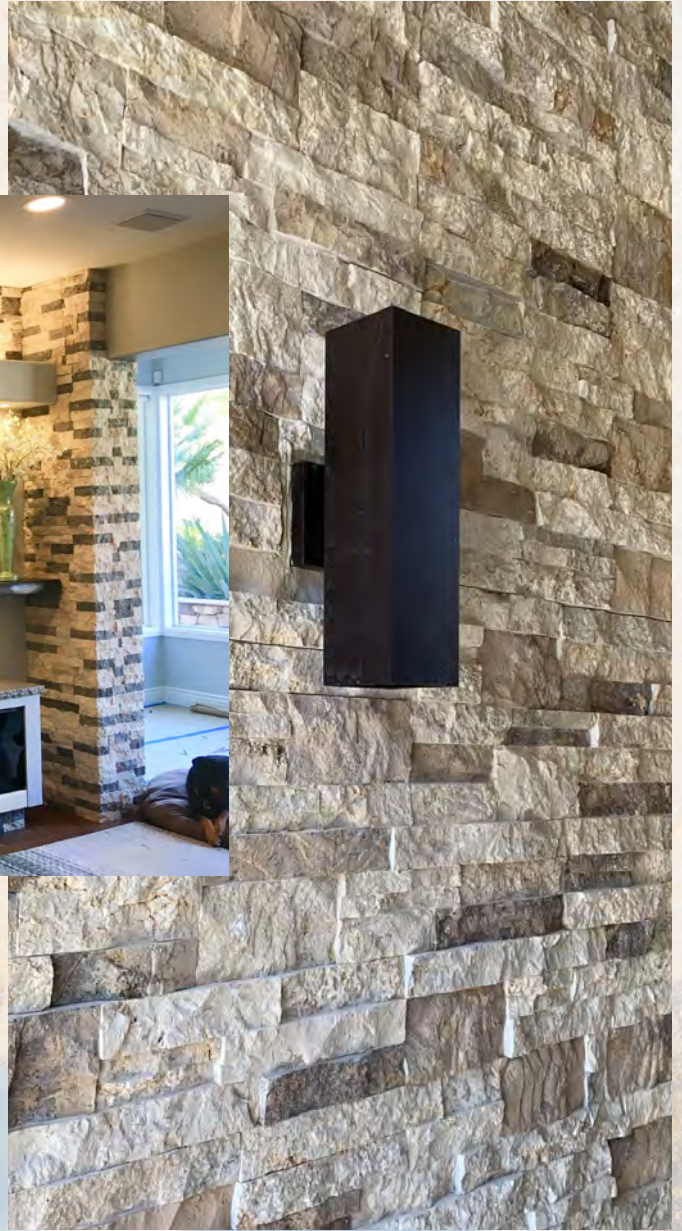
*Stacked Stone
Brown*



*Stacked Stone
Mocha Almond*



*Stacked Stone
Oyster Shell*

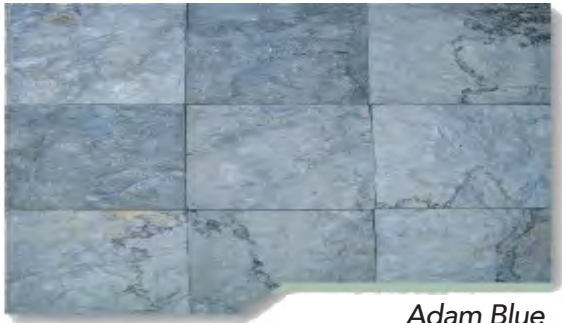


*Stacked Stone
Mocha Almond*

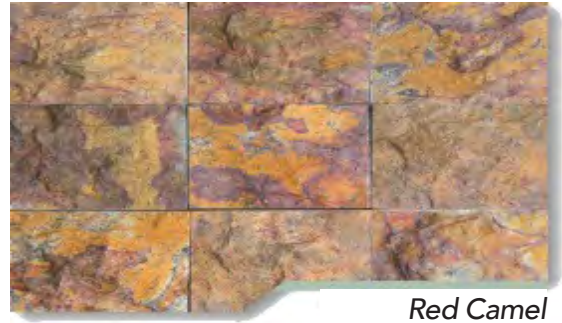


*Stacked Stone
Mocha Latte*

SHADE GALLERY & SPLIT FACE



Adam Blue



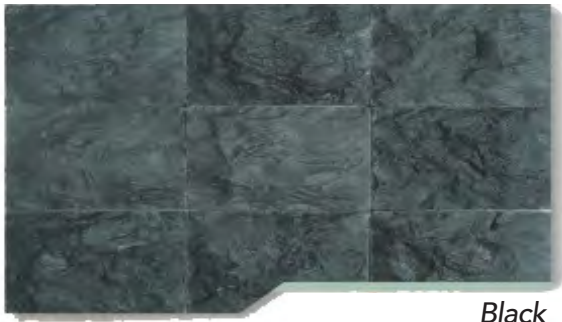
Red Camel



Almond



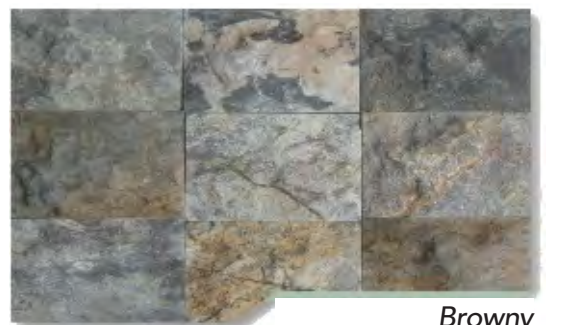
Sand Beige



Black



Oyster Gray



Brownny



Creamy Peach



Baltic

Chiseled stone piece, with a cloven look consisting of individual random length pieces.

TEXTURED FINISH



*Split Face
Oyster Gray*



*Split Face
Almond*



*Split Face
Sand Beige*



*Split Face
Sand Beige*

TUSCAN ASHLAR



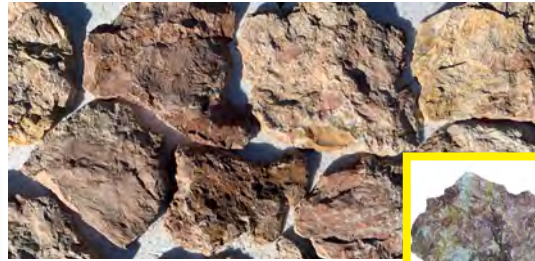
Adam Blue



Brownny



Black



Chocolate Swirl



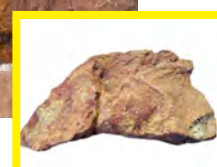
Mocha latte



Lava Rock



Red Rock



Red Fusion



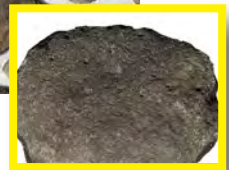
TEXTURED FINISH



Rojo Blush



River Rock



Sand Beige



Oyster Gray



BLEND AND MIX YOUR OWN COLOR

CORNERS



Almond



Oyster Gray



*Tuscan Ashlar
Red Fusion*

*Tuscan Ashlar
Oyster Gray*

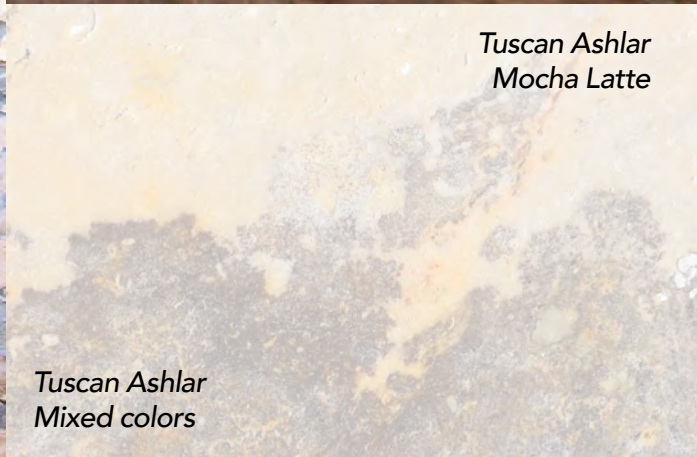


*Tuscan Ashlar
Mixed colors*



Natural sliced skin from a boulder, with irregular shape, comes in a mixture of colors and can be blended upon order request.

Note: corners are available in all colors



*Tuscan Ashlar
Mocha Latte*

*Tuscan Ashlar
Mixed colors*



*Tuscan Ashlar
Lava Rock*

TILES & SLABS

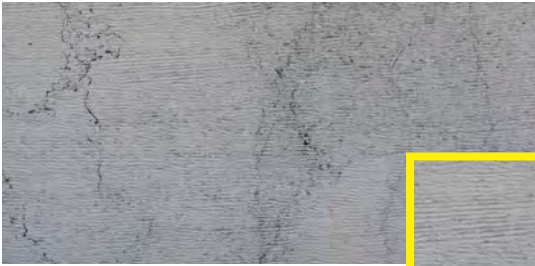
FLOOR, VANITY & WALLS





Combed
Oyster Gray

BLADED



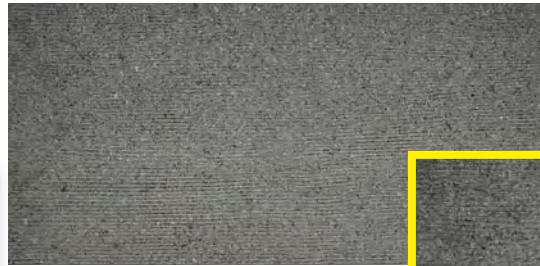
Adam Blue



Almond



Baltic



Black Basalt



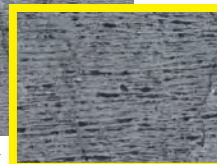
Gray Basalt



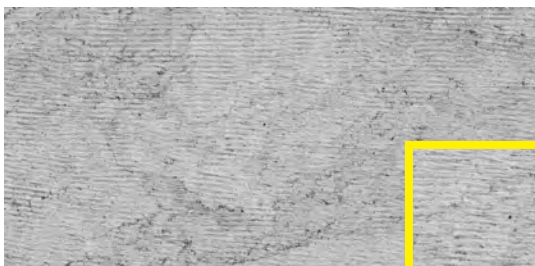
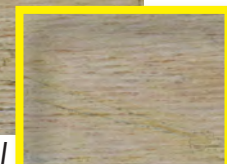
Brownly



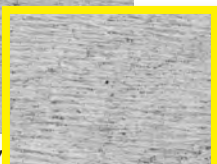
Black



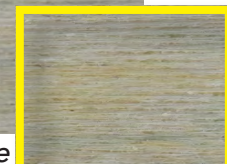
Red Camel



Oyster Gray



Sand Beige

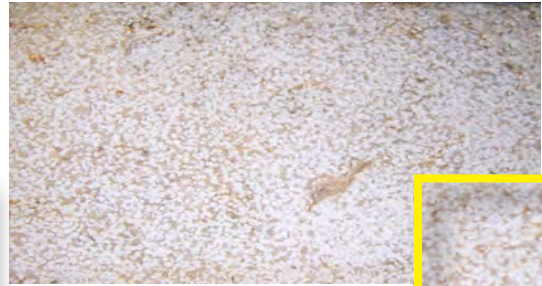


TILES & SLABS

BUSH HAMMER



Adam Blue



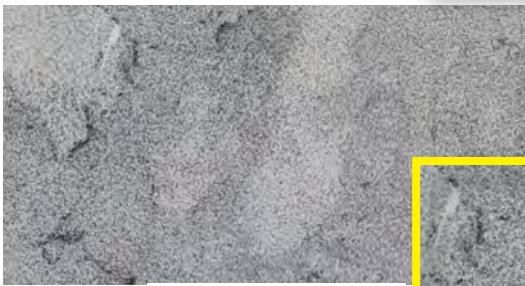
Almond



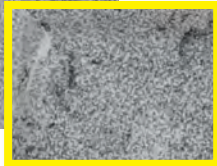
Battic



Black basalt



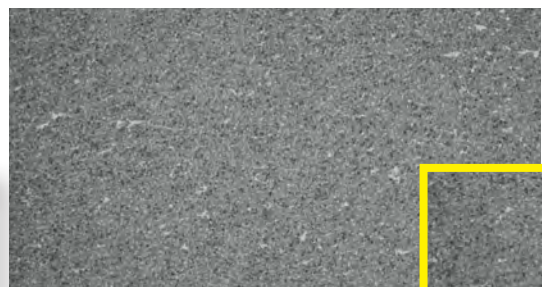
Black



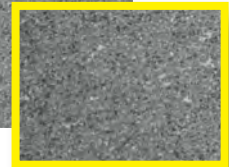
Brownny



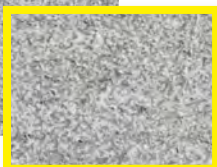
Red Camel



Gray Basalt



Oyster Gray



Sand Beige





Bush Hammer / Creamy Chocolate

Available in Classic Bush Hammer or Brushed Bush Hammer

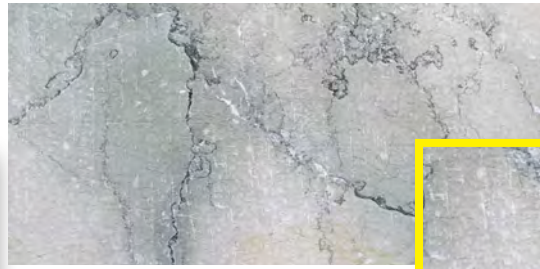


*Bush Hammer
Red Camel*

CANVAS



Almond



Adam Blue



Baltic



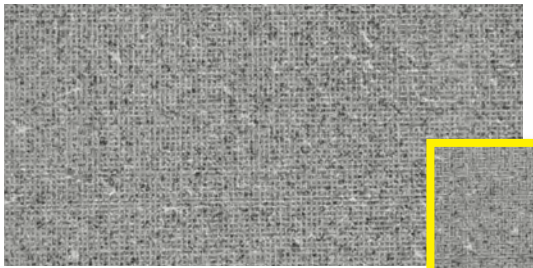
Brownny



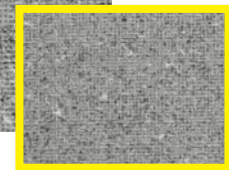
Black



Black Basalt



Gray Basalt



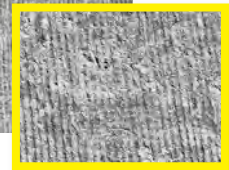
Red Camel



Sand Beige



Oyster Gray



Available in Classic Canvas or Soft Canvas

COMBED



Adam Blue



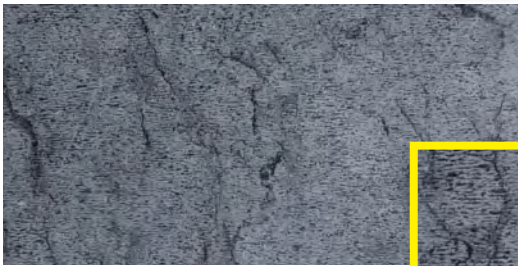
Almond



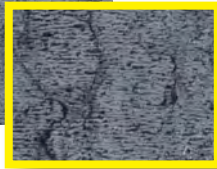
Baltic



Browny



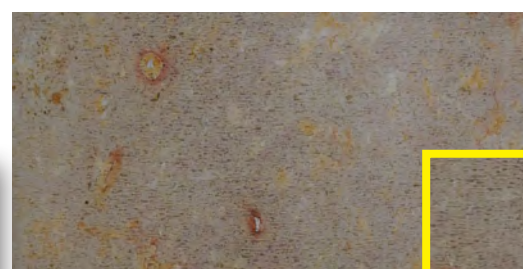
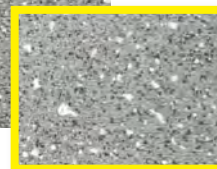
Black



Black Basalt



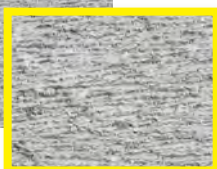
Gray Basalt



Red Camel



Oyster Gray



Sand Beige



TILES & SLABS



12,18"x36" or 12,18" x Random Flat tile with combed texture with a half inch thickness





Combed
Oyster Gray

Combed
Oyster Gray

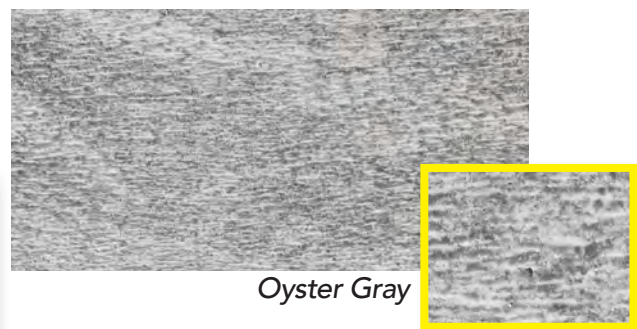
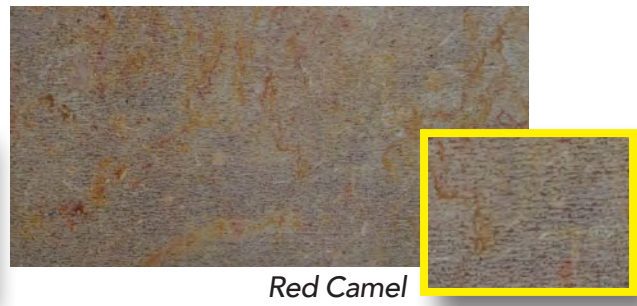
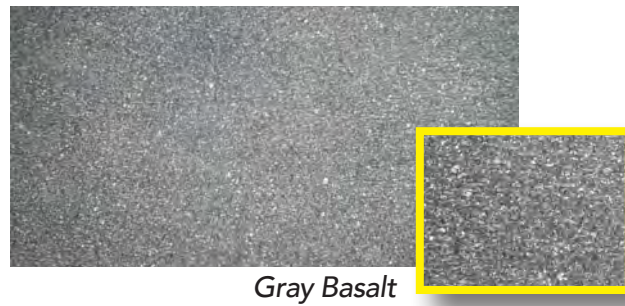
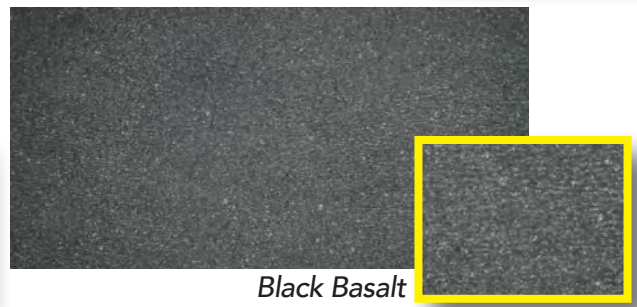
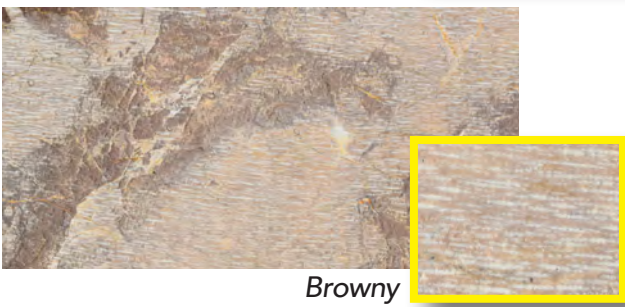
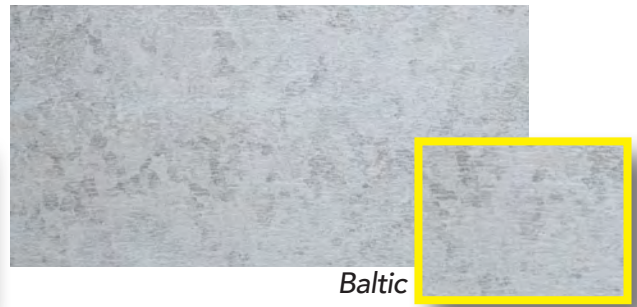
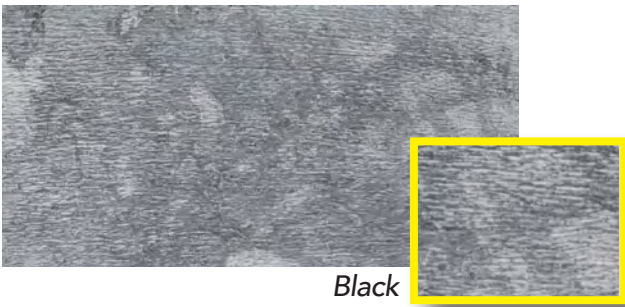
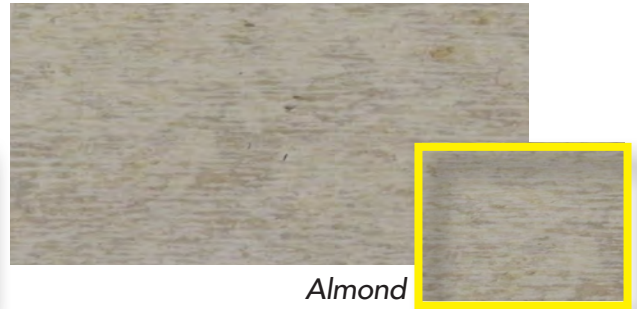
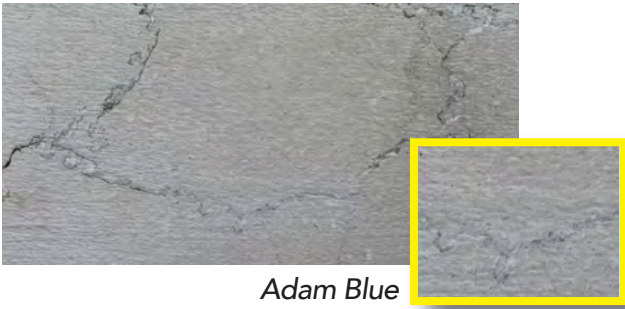
Combed
brownny



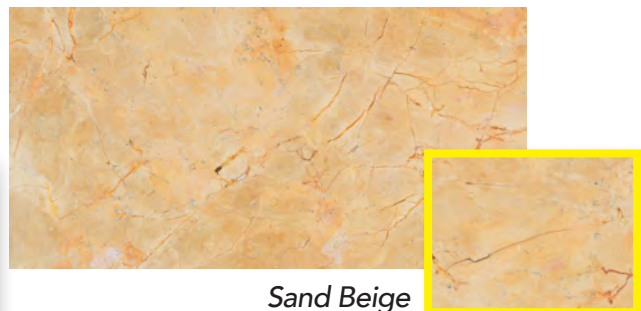
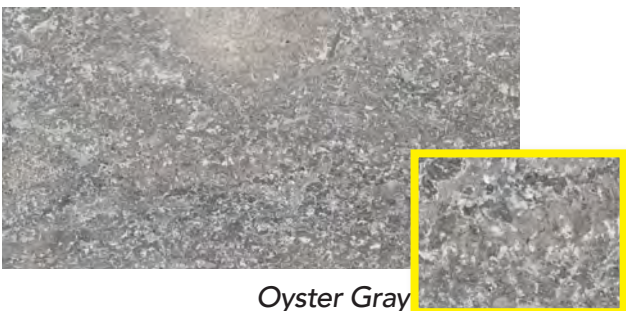
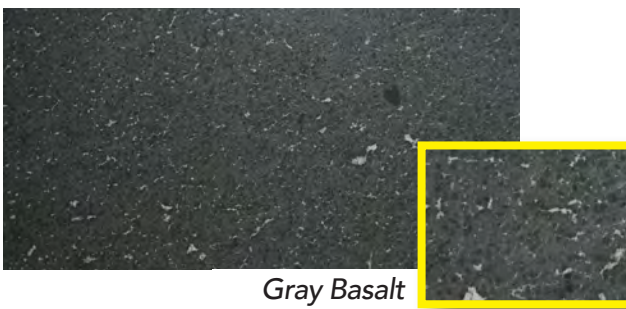
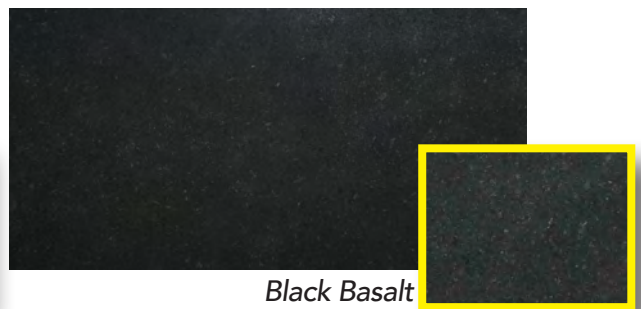
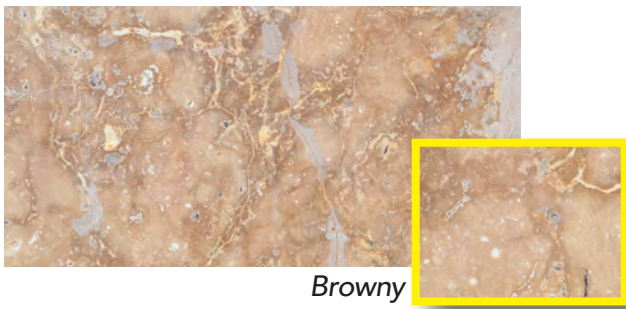
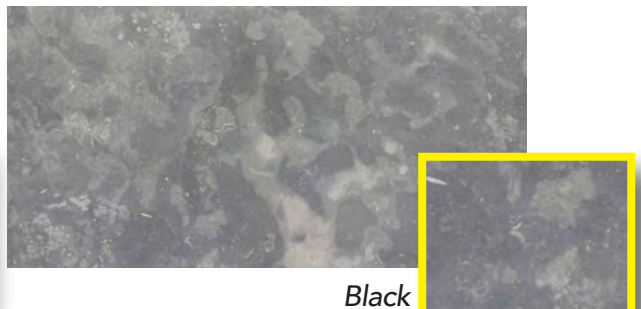
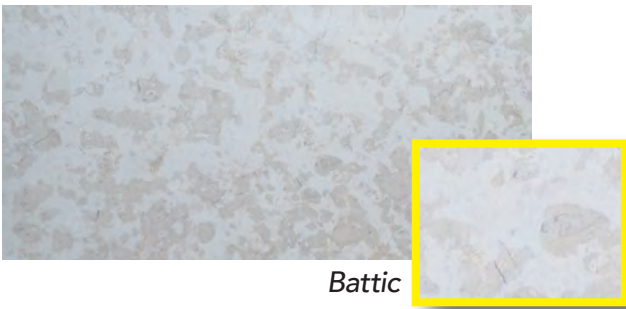
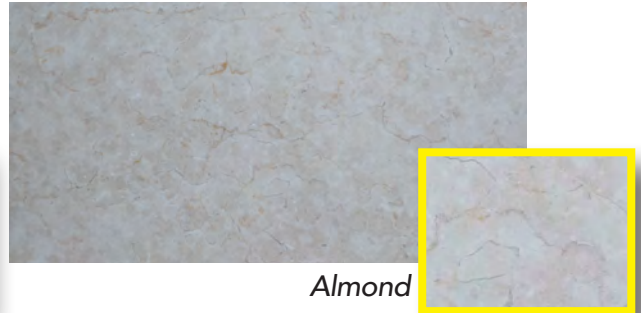
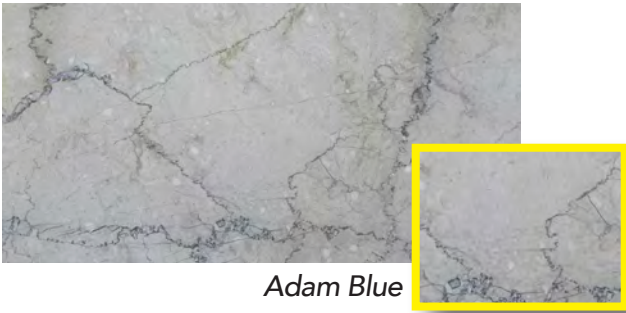
Combed
Oyster Gray



COMBED SOFT



HONED & POLISHED



TILES & SLABS



*Honed
Oyster Gray*

Flat tile with honed texture, with a half inch thickness



*Honed
Black Basalt*



*Honed
Brown*

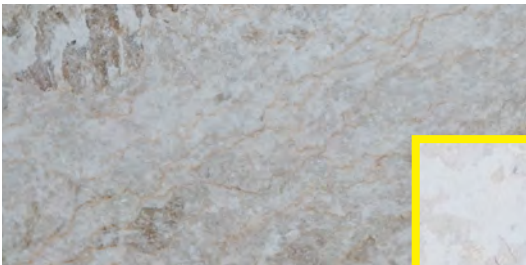
LEATHERED & BRUSHED



Adam Blue



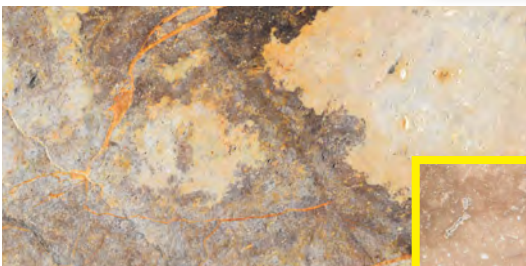
Almond



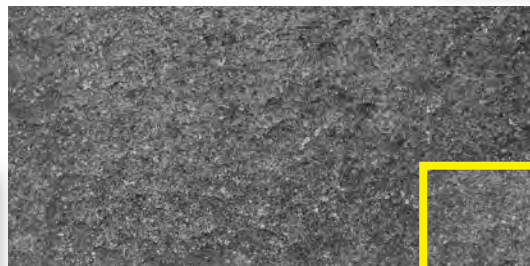
Baltic



Black



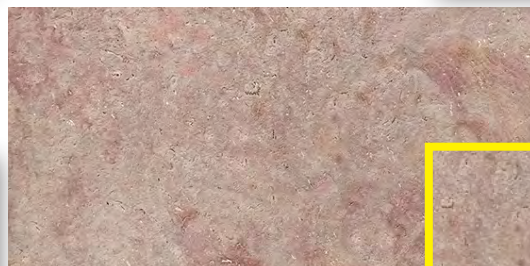
Brownny



Black Basalt



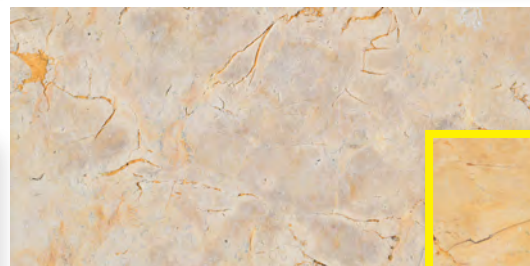
Gray Basalt



Red Camel



Oyster Gray



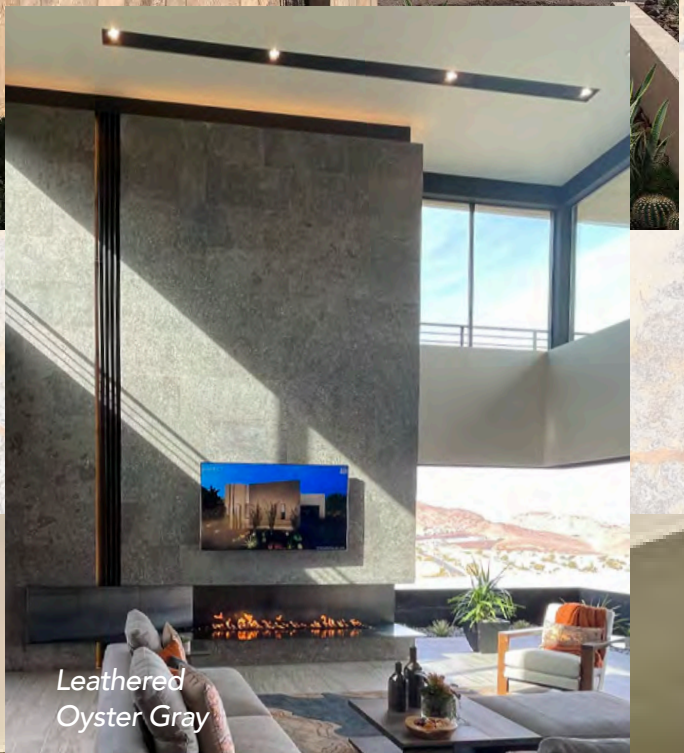
Sand Beige

TILES & SLABS





*Leathered
Brown*



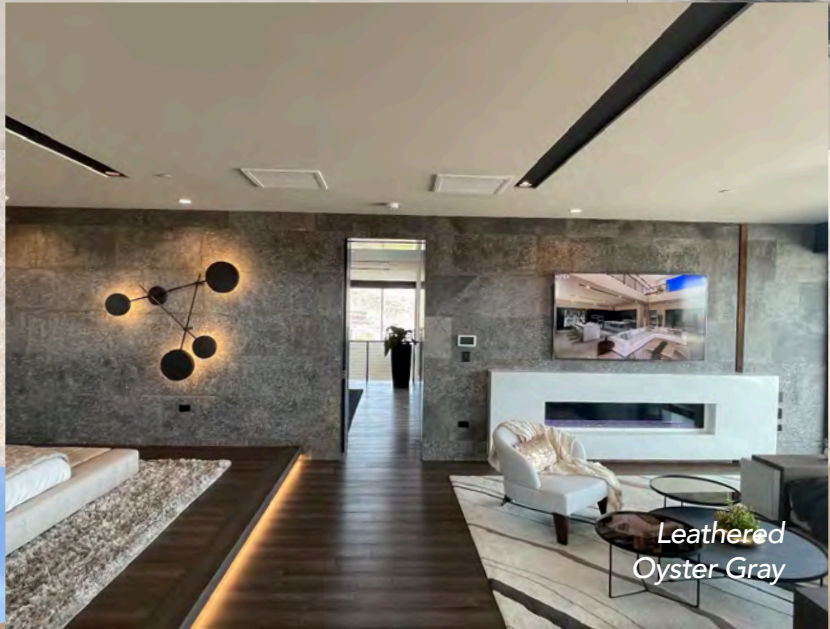
*Leathered
Oyster Gray*



*Leathered
Oyster Gray*



Leathered
Brown



Leathered
Oyster Gray



Leathered
Oyster Gray

PARQUET



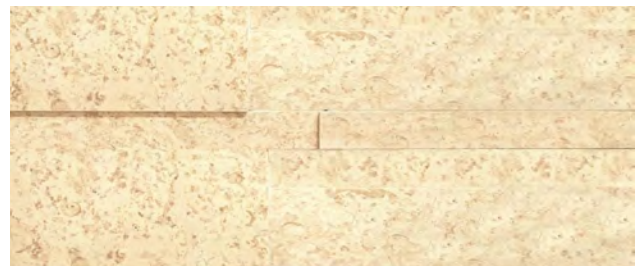
Bush Hammer Battic



Bush Hammer Sand Beige



Bush Hammer Oyster Gray



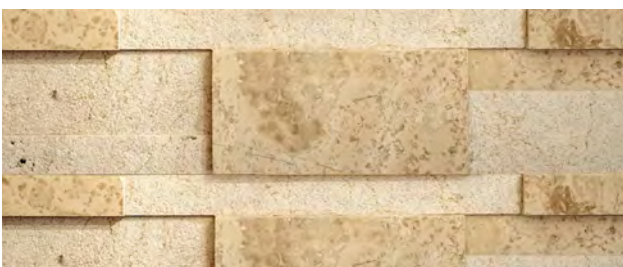
Honed Battic



Honed Sand Beige



Honed Oyster Gray



Bush Hammer Honed Battic



Bush Hammer Honed Sand Beige



Bush Hammer Honed Oyster Gray

Mixture of finishes & sizes of high 2" 4" 6" tile pieces by random length with variable thickness. Stone pieces are glued together creating an 36x"8" solid panel



Parquet
Honed Sand Beige



Parquet
Sand Beige

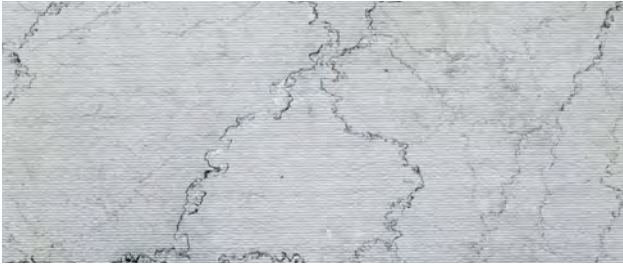


Parquet
Honed Baltic



Teakwood
Sand Stone

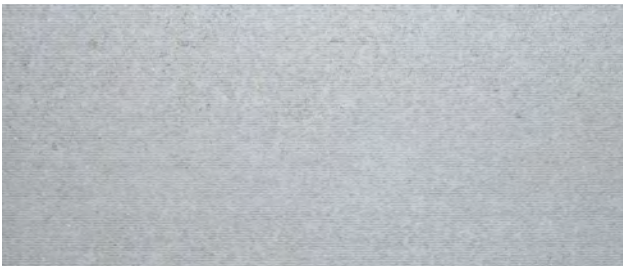
PASO 1.5 MM



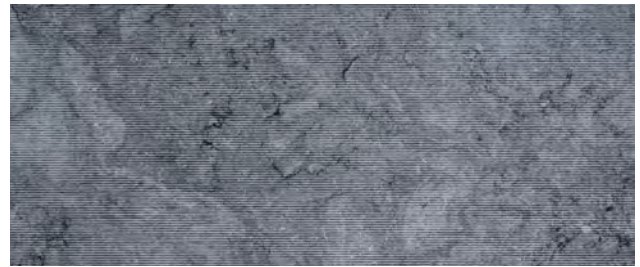
Adam Blue



Almond



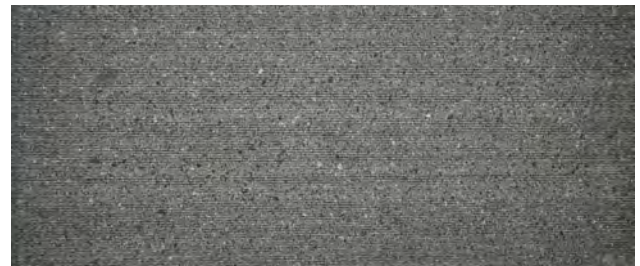
Baltic



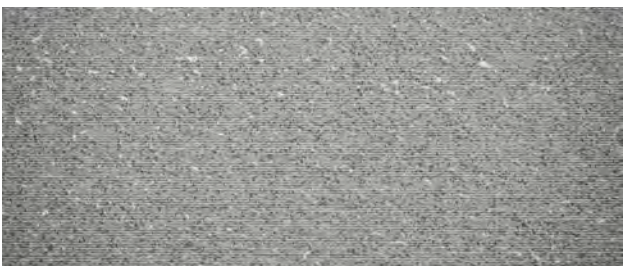
Black



Brownny



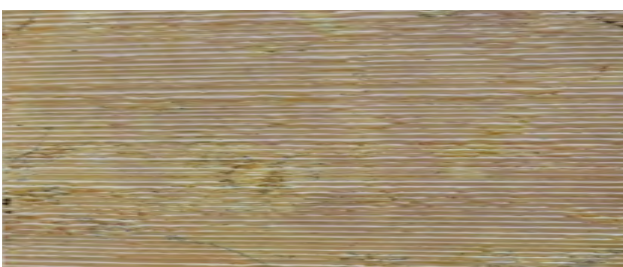
Black Basalt



Gray Basalt



Oyster Gray



Red Camel



Sand Beige

TILES & SLABS

PASO 2.5MM



Adam Blue



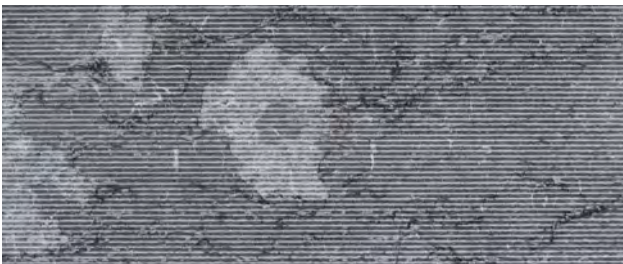
Almond



Baltic



Black Basalt



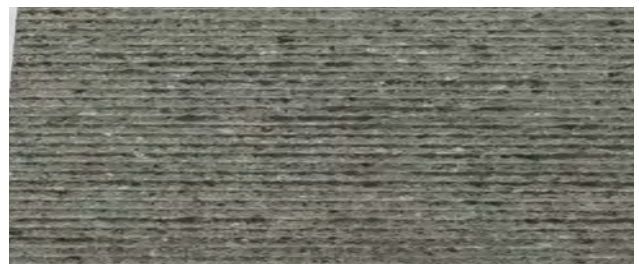
Black



Brownny



Red Camel



Gray Basalt

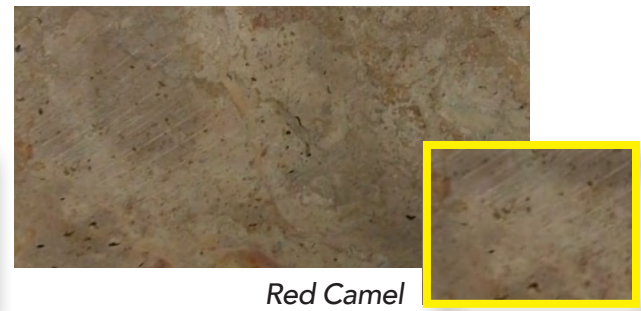
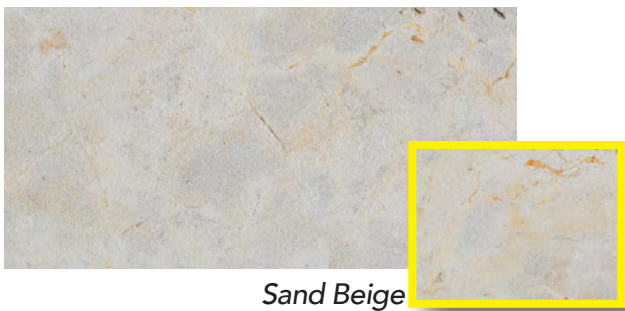
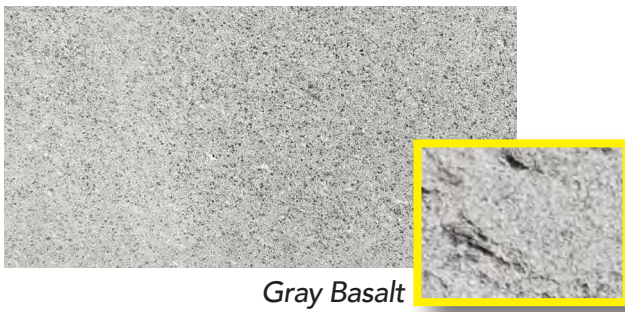
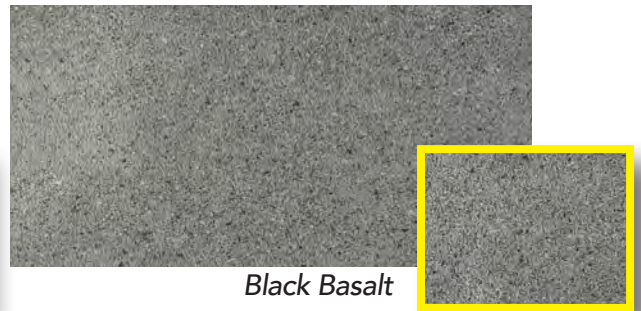
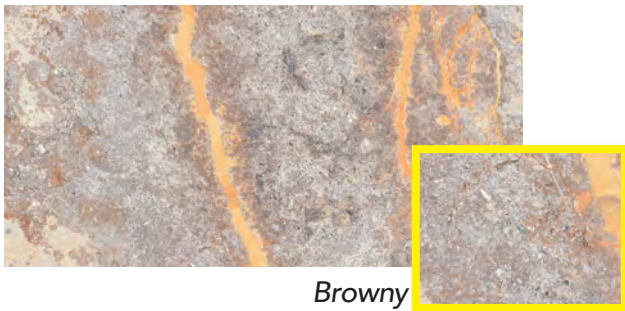
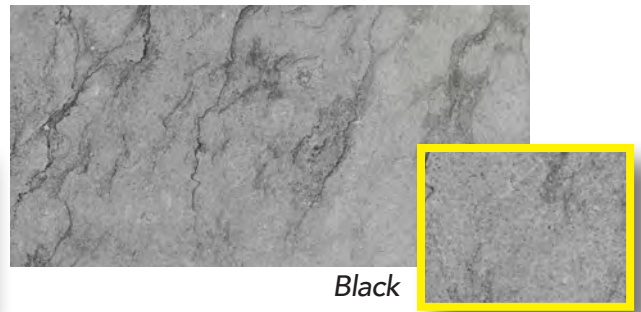
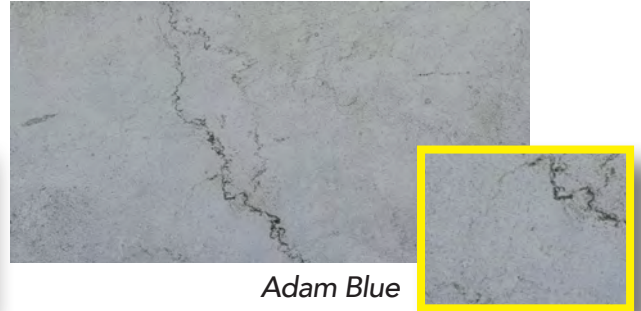
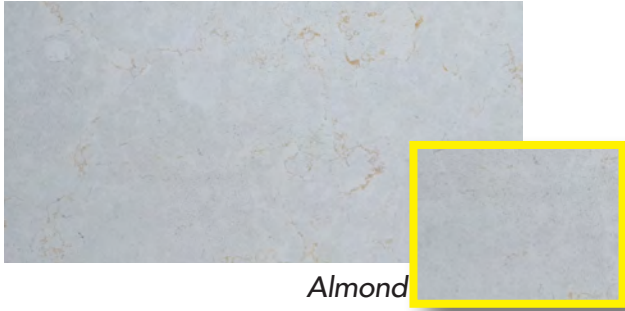


Oyster Gray



Sand Beige

ROUGH SAWN & SAND BLASTED



TILES & SLABS

SCORED HORIZONTAL

1CM



Baltic



Brownly



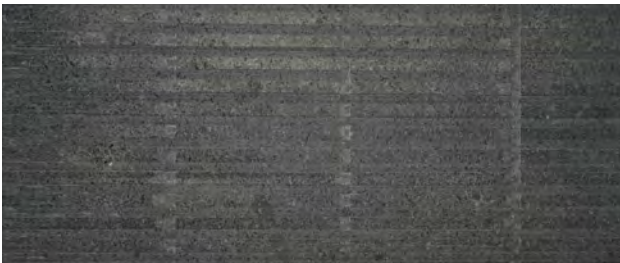
Red Camel



Oyster Gray

SCORED HORIZ. SKIP VERT.

SCORED VERT. HORIZ. 1CM



Black Basalt



Adam Blue



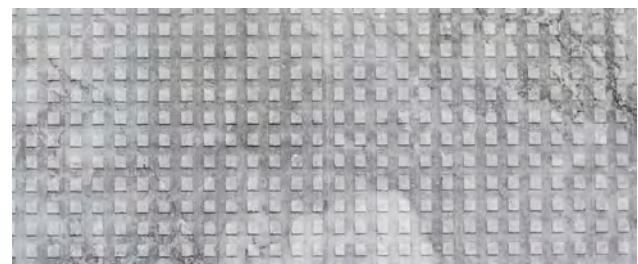
Gray Basalt



Almond



Sand Beige



Black

SCORED



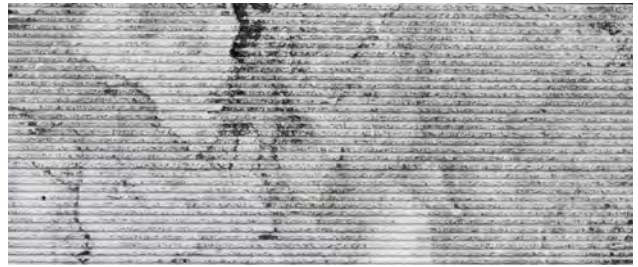
Almond



Browny



Adam Blue



Black



Baltic



Black Basalt



Gray Basalt



Red Camel



Oyster Gray



Sand Beige

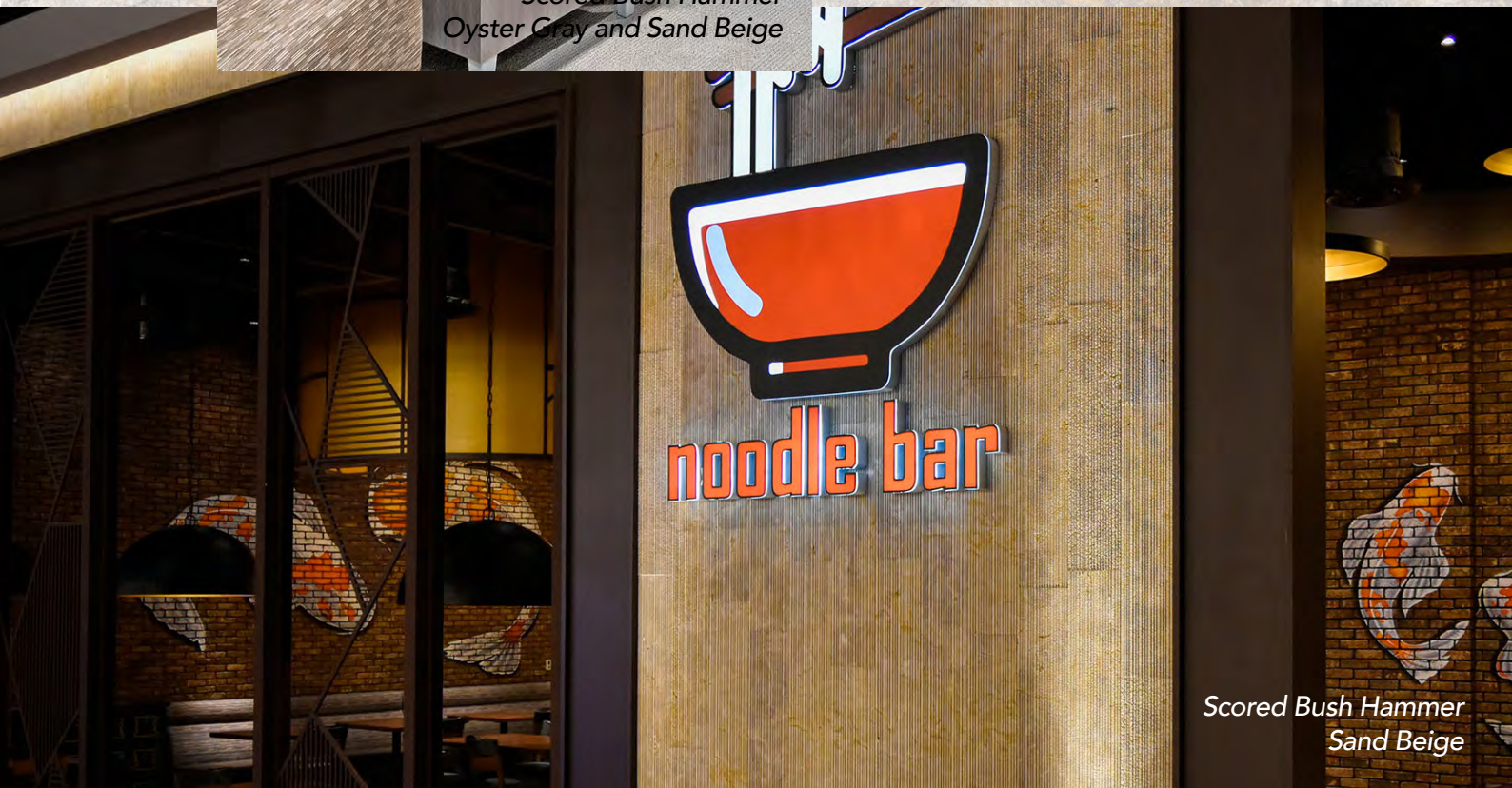


*Scored Split Face
Black*



*Scored Bush Hammer
Oyster Gray and Sand Beige*

Can be used for Pavers and Sidewalks



*Scored Bush Hammer
Sand Beige*

SCORED CHISEL

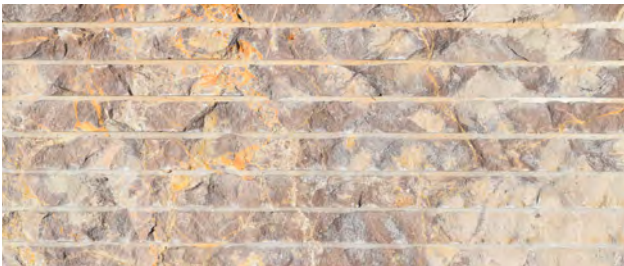
3/4"



Almond



Adam Blue



Brownny

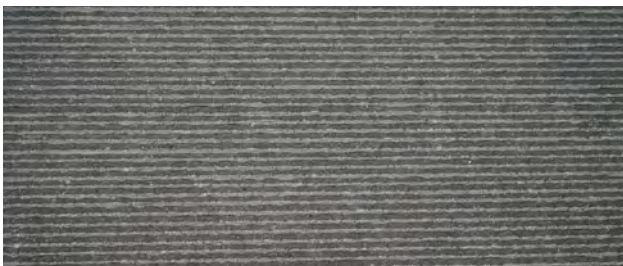


Red Camel

SCORED CHISEL

3MM

SCORED FULL CHISEL



Black Basalt



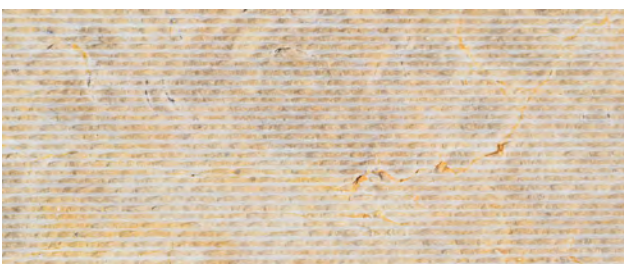
Baja Sand



Oyster Gray



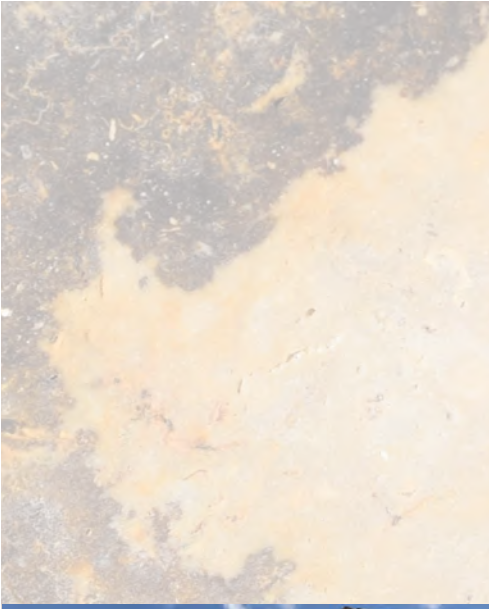
Oyster Shell



Sand Beige



Mocha Almond



Scored Full Chisel
Battic



Scored Full Chisel
Sand Beige



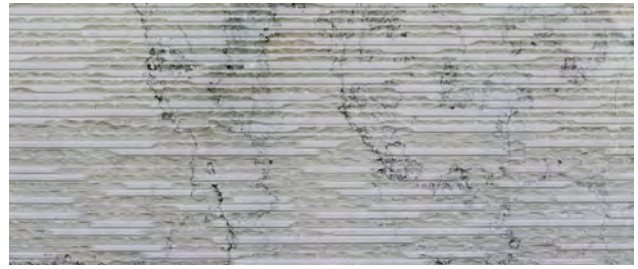
Scored Full Chisel
Oyster Gray



SCORED SKIP CHISEL 3MM



Almond



Adam Blue



Red Camel



Browny



Oyster Gray

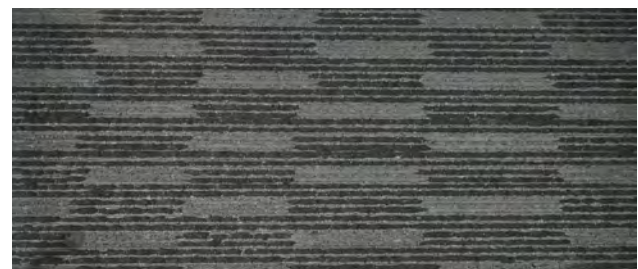


Sand Beige

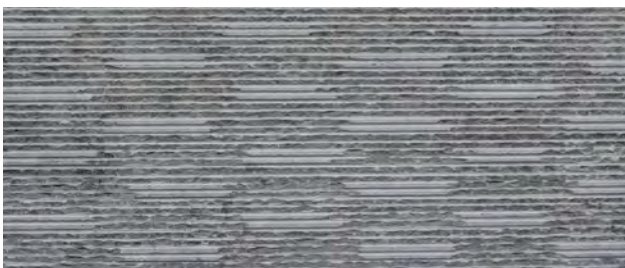
SCORED UNIFORM SKIP CHISEL 3MM



Baltic



Black Basalt



Black



Gray Basalt

TILES & SLABS

SEGMENTED



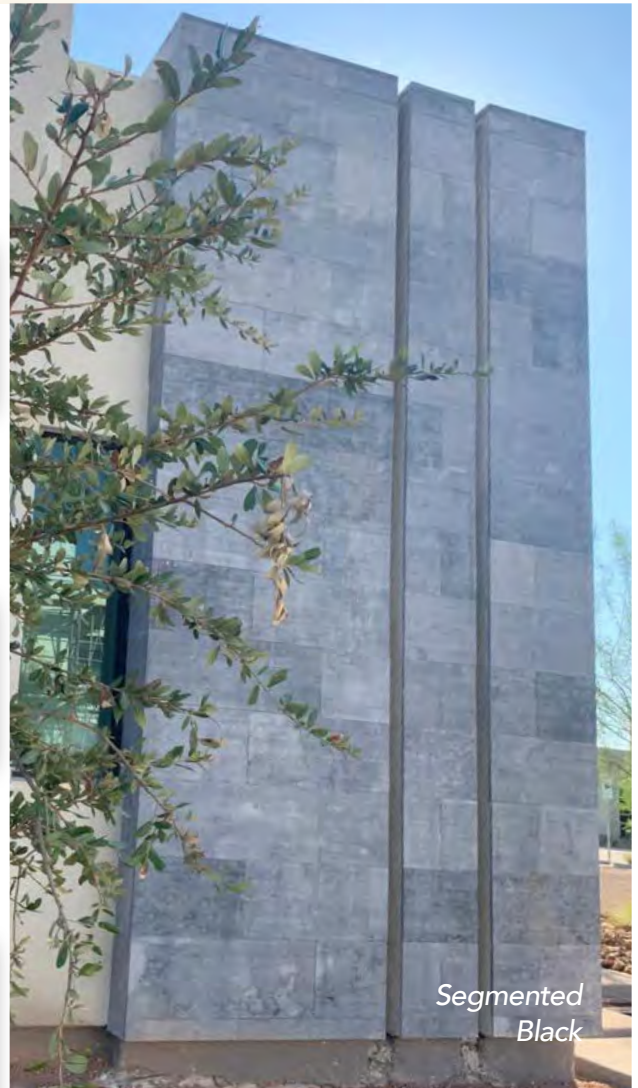
Baltic



Black



Oyster Gray



Segmented
Black



Segmented
Black

POOL & LANDSCAPE





MOSAIC



NP-28



NP-39



NP-43



NP-46



NP-47



NP-50



NP-51



NP-53



NP-54



NP-55



NP-56



NP-57



NP-58



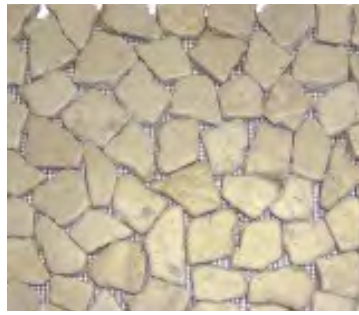
NP-59



NP-61



Red Camel



Almond



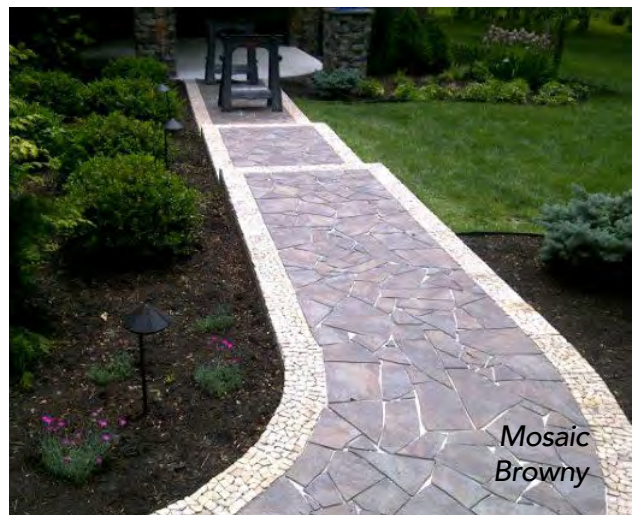
Black



Pool Pebble
Sand Beige

Mosaic / Pebble
6"x12" - 12"x12"
Small stone are tumbled to create a rustic finish

Interlocking Mosaic / Pebble
Tumbled stone pieces



Mosaic
Brown

COPING, WALL CAPS & WAINSCOT



Adam Blue



Almond



Baltic



Polished Oyster Gray



Polished Creamy Peach



Black



Leathered Sand Beige



Honed Sand Beige Chiseled Edge



Leathered Brownly



Sand Beige

Finished on both sides, come in 4 finishes:
Polished, Honed, Leathered or bush hammer
and sizes are
12"x12", 12"x24" and 12"x48".

it can be used not only around pools but
also as a planter, window seats or stairs.



WATER FEATURES



Brownny cone wok pod on Almond Column



Brownny Square Wake Pod



Wake Pod circle scalloped edge Sand Beige



Cape Cod Wake Pod on column



Adam Blue, Ledge Stone



Natural Stone



Sand Beige



Brownny

Spillover

Flower Pot

POOL & LANDSCAPE



LIGHTING / SPEAKERS COVER



Almond



Sand Beige



Browny



BATHROOMS

Sinks



River Rock



Black Bush Hammer



Honed Oyster Gray

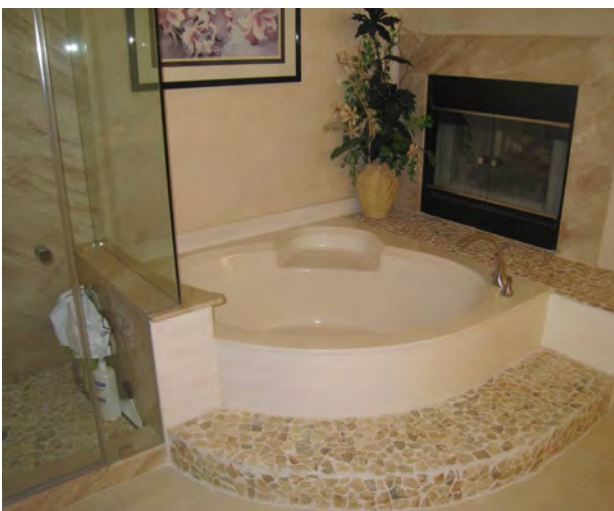


Oyster Gray

Accessories



Vanity Top



Sunbathe pool waterfall



Onyx



River Rock



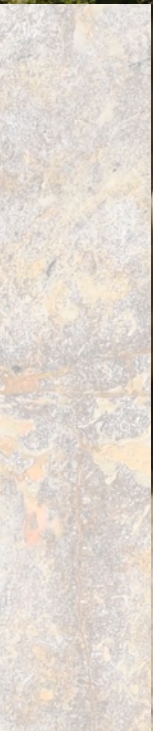
Adam Blue



Onyx



Sand Beige



Onyx

TECHNICAL INFORMATION

FINISHES	IN STOCK MATERIAL	CUSTOM
Biscotti	6" x 24" x 3/8" Thickness	Cut to size
Bush Hammer	8"x Random x 3/8" Thickness	Cut to size
Ledge Stone	6"x24" Standard Size 12"x24" Mesh	Cut to size
Rocky Mountain	12" x 24"	Cut to size
Rocky Mountain Tumbled	12" x 24"	Cut to size
Sienna	6" x 24" x 1/2" Thickness 8" x 36" x 1/2" Thickness	Cut to size
Split Face	6"x random x 1/2" Thickness 8"x random x 1/2" Thickness 12"x random x 1/2" Thickness	Cut to size
Stacked Stone	6" x 24" x 3/8" Thickness	Cut to size
Tuscan Ashlar	Random size	Cut to size
Blade	Cut to size	Cut to size
Blade Vertical Horizontal	Cut to size	Cut to size
Brush Bush Hammer	Cut to size	Cut to size
Canvas	12" x 36"	Cut to size
Combed	12"x36" x 1.6cm 12" x random x 1.6cm	Cut to size
Combed Brush	Cut to size	Cut to size
Combed leathered vertical Horizontal	Cut to size	Cut to size
Honed	24" x 24"x 3/4" Thickness 12" x 24"x 1/2" Thickness 8" x random x 1/2" Thickness 16"x8" x 1/2" Thickness 16"x16" x 1/2" Thickness 16"x24" x 1/2" Thickness	Cut to size
Honed with Chiseled Edges	12"x Random	Cut to size
Leathered	Cut to size	Cut to size
Parquet	8"x36"	Cut to size
Passo 1.5mm	Cut to size	Cut to size
Passo 1.5mm Vertical Horizontal	Cut to size	Cut to size
Passo 2.5mm	12"x36"x1/2" Thickness	Cut to size
Passo 2.5mm Vertical Horizontal	Cut to size	Cut to size
Rough Sawn	8"x Random x 3/8" Thickness 12" x 48"	Cut to size
Sand Blasted	Cut to size	Cut to size
Scored Full Chisel	8"x36" x1/2" Thickness 8"x Random x1/2" Thickness	Cut to size
Scored Bush Hammer	8"x36" x1/2" Thickness	Cut to size
Scored Bush Hammer 3mm	Cut to size	Cut to size
Scored Horizontal 1cm	Cut to size	Cut to size

FINISHES	IN STOCK MATERIAL	CUSTOM
Scored Horizontal Skip Vertical 1cm	Cut to size	Cut to size
Scored Vertical Horizontal 1cm	Cut to size	Cut to size
Scored Chisel 3mm	Cut to size	Cut to size
Scored Chisel 2cm	Cut to size	Cut to size
Scored Skip Chisel 3mm	Cut to size	Cut to size
Scored Chisel ¾"	Cut to size	Cut to size
Segmented	12"x random 12"x24" 12"x36"x1.6cm Thickness	Cut to size
Teakwood	Cut to size	Cut to size
Uniform Skip Scored Chisel	Cut to size	Cut to size
Mosaic	12"x12"x3/8" Thickness 6"x12"x3/8" Thickness Cut to size Interlocking	Cut to size
Coping/Wall caps	6"x12"x1 1/4"	Cut to size
Bullnose coping	12"x12"x1 1/2" Thick 12"x24"x1 1/2" Thick	Cut to size
Wainscot	2"x12"x1 1/2" Thick	Cut to size

Our Stone is a Natural solution for any design!

Textures and sizes are not limited to what is stated above. We also "Cut to Size" any design you have in mind.



You have the option of ordering any size from our wide selection, so be creative! Keep in mind, one-piece seamless corners are available as well.

Our product is a natural stone, which can have a color variance from 10% to 40%.

COLORS	DESCRIPTION
Adam Blue	Light Gray background with veins of light and dark blue
Almond	Consistent light almond color with minimal variation
Battic	Almond based with small flecks of seashell
Black	Charcoal color with minimal variation in shades
Baja Sand	Mixture of Sand Beige and Brownly
Brownly	Caramel color with splotches of dark brown
Cape Cod	Battic Based color with a high percentage of grayish seashells
Creamy Chocolate	Milk chocolate color with a small percentage of cream color
Creamy Peach	Blend of tan, beige and peach shades
Chocolate Swirl	Mixture of Creamy Chocolate wavy honey colors
Desert Sand	Medium beige based color contained with black speckled veins
Desert Sun	Mixture of Desert Sand, Sand Beige and Red Cherry
Hazelnut	Mixture of Sand Beige, Red Camel and Brownly Colors
Oyster Gray	Combination of light to dark tones of gray
Oyster Shell	Mixture of Almond, Battic and Oyster Gray colors
Sierra Passion	A mustard based color with red wine splotches and knots
Red Camel	A mustard based color with red wine splotches and knots
Red Cherry	Red and beige base color with black speckled veins
Red Fusion	Mustered based color with red wine splotches and knots mixed with a blend of tan, beige and peach shades
Red Rock	Varying shades of rosy brick, mixed with gold and cream hues
Rojo Blush	Tan base with shades of red and black speckled veins
Rosso	Variation of tan base with red spots
Mocha Almond	Mixture of Almond, Battic and Brownly colors
Mocha Latte	Mixture of 3 light colors Almond Baltic and Cape Cod
Sand Beige	Beige colored with minimal variation
Wavy honey	A high variation of earth tone colors including honey cream and milk chocolate shades
Gray Basalt	Asphalt gray with black specs
Black Basalt	Dark color with minimal variation in shades

We stock over 500,000 square feet of various colors and finishes in our warehouse. Our stone veneer is shipped in crates that are securely cushioned with Styrofoam.

We ship all over the USA and internationally using either our shipper or yours. You can also mix and match colors as well as finishes for a genuine look of your own.

INSTALLATION GUIDE

Natural Stone Veneer is installed just like tile, using thin-set and cutting with a wet saw. You can install on exterior brown coat of stucco, cement boards and masonry blocks. Installation on interior surfaces can be done the same way as exterior, or on walls like drywall or plywood by screwing a wire mesh, before laying the veneer. Make sure that the substrate is attached properly to the structure, prior to installation. Please read instructions on using thin-set, to insure maximum adherence onto substrate, and check below instructions.

PREPARATION

- 1- Tools: ¼" Trowel, saw, brushes, cutting tools, sponges for cleaning,
- 2- Make sure that all the areas receiving stone are cleaned, plumbed and leveled.
- 3- Make sure to have a clean stone cut and do not forget to clean the backside of each tile, before laying it.

INSTALLATION

- 1- Apply a moisture vapor barrier if needed, when you are doing an exterior application. Peel back the outer layer to expose the sticky backside of the membrane and simply stick it onto your surface.
- 2- Apply liquid waterproofing all over the surface and allow it to dry based on the duration of each product referring to the manufacture's recommendations and specifications
- 3- After finishing the waterproofing coat. Screw a metal lath using 1"1/2 screws. Screws shall be placed on the lath reaching the wood frames leaving a 6" horizontally between each screw. (Metal Lath is required only on drywall. Cement boards, stucco, and masonry block do not require metal lath installation).
- 4- Use a 1/4" trowel to cover completely (100%) the backside of each stone tile with thin-set. Add scratch coat with thin set using your 1/4" trowel. Before the scratch coat dries, scrape horizontal grooves into it, and allow it to set up. Then lay your stone.

LIFE TIME WARRANTY

- 1- The warranty stands when used on structures that conform to local codes, and when installed according to the adhesion manufacturer's specifications.
- 2- Warranty does not cover damage or falling down stone resulting from building settlement, substrate cracking, improper installation, wall movement, and/or Acts of God.
- 3- Natural Stone Veneer is not liable for structure design and engineering flaws, aesthetics of installed products, or workmanship.
- 4- Our stone is a dolomitic limestone, which is a very dense stone compared to other natural stone, it has been tested for freeze and de thawed weather and all other weather conditions.
- 5- NATURAL STONE VENEER warrants defective-free products for a limited lifetime to the original purchaser and may not be transferred.



QUESTIONS & ANSWERS

1. Is this dolomitic limestone, limestone or manufactured stone?

Our stone is dolomitic limestone, which is much denser than limestone, and since it is natural stone, the color is all the way through, unlike the manufactured stone.

The crystals in dolomitic limestone acts as a natural sealant, creating a dense product to sustain all weather conditions. This product is defined by its durability and high density. It is quarried in a tropical area, which has sustained the water climate for millions of years.

2. How long we have been in business?

We have been in business for 21 years. We created the idea of natural stone thin veneer.

3. Does natural stone veneer have a warranty?

Yes, NATURAL STONE VENEER has a limited lifetime warranty provided to the original purchaser.

4. How and where this product is being sold? Will the price varies for larger quantity?

Our product is being sold nationally and internationally. Prices vary depending on quantity; you can order it by pallet size or by container size.

5. Do you custom order?

We do cut-to-size order. We can custom fabricate any finish, color or size you want.

6. Where can this stone be used?

Almost anywhere, you can think of on any exterior or interior surfaces. (Interior and exterior walls, fireplaces, kitchen, bathrooms, bars, cellars, as a trim or border around windows, pool decks, etc., you be the creator.)

7. Why use Natural Stone Veneer versus full body stone cladding?

- Less weight on structure since it's thinner, thickness range (3/8" to 1-1/2")
- Goes over normal foundation without having to increase its size
- Gives you the same look by using corners if available or mitering the flats if not available.

8. Can this stone be submerged in water?

Yes it can be submerged in water due to its density and low absorption rate.

9. Can NATURAL STONE VENEER be installed vertically or horizontally?

Depending on your design, you can install the stone in whichever direction you want, and create patterns with different sizes and finishes as well. In addition, you can mix colors in one order, to achieve more variety.

10. What about waste?

The waste factor is 10% to 20% of the total needed quantity. However, in Natural Stone Veneer, you can always use any broken piece, and reuse it to stagger the joints. It will always look natural.

11. How much color variance in your product?

Color variance depends on selected color, and could vary between 10% to 40%. Your installer should always examine the entire shipment of purchased stone and prepare your design by mixing and matching the colors visually, before installation, to achieve the best result. (Please check the color variance sheet for more details)

12. How natural stone veneer is installed?

Natural stone veneer is installed just like tile, using thin-set or any set material, made for natural stone products or marble tile. It can be cut with a wet saw, and installed on exterior stucco surfaces, cement boards and masonry block. Installation on interior surfaces can be the same as exterior or on surfaces like cement boards or painted drywall, using a wire mesh screwed on painted drywall. Make sure that the substrate is attached properly to the structure prior of installation, and read instructions on using thinset to insure adherence onto substrate. (Please check installation guide for more details)

13. Does natural stone veneer need to be mechanically attached?

Natural Stone Veneer has been engineered to be installed on an existing foundation, (supporting 50lbs./sq. ft.) without major preparation to the structure, which would make Natural Stone Veneer one of the lightest stone veneer. Therefore, it could be installed using thin-set for higher elevations. (Please check with your structural engineer to verify your local codes.)

14. What thin-set (adhesion) color should I use?

Using white thin set will keep the stone lighter. If you use grey colored thin-set, it will darken the stone one shade darker.

15. How do I finish exposed edge?

Natural Stone Veneer offers stone corners and caps to cover exposed edges. We have corners and caps to cover exposed edges.

16. Does natural stone veneer needs grouting?

Grouting will depend on your taste and the look you are trying to achieve. Our product can be butt joint with no grout line.

Sometimes grouting is used in a freezing climate to prevent the water to go behind the stone. When butt joint use non-sanded grout to allow the grout to fit in joint.

You can use ¼" grout to achieve certain look.

17. Do I have to seal natural stone veneer?

Sealing the stone is not necessary. However, it can be added as extra protection especially for the grout lines in freezing and de-thawed areas, or to prevent water seeping behind the stone if exposed to water regularly. Two sealants can be used – deep sealer and surface sealer. The deep sealer will not change the natural look of the stone. The surface sealer will enhance the colors of the stone and can add either a glossy or a matt finish. Wet a sample with water and this will illustrate the color after surface sealing.

18. How do I maintain natural stone veneer?

Our stone is virtually maintenance-free. You can sand blast it or pressure-wash it, as well as acid wash it depending on the depth of the stain.

Our stone is virtually maintenance-free. You can sand blast it or pressure-wash it, as well as acid wash it depending on the depth of the stain

The condition of the surfaces where you intend to install our product, your weather and other factor, beyond our knowledge and control, make all of the above suggestions only for general conditions

All above figures can be changed depending on your jurisdictions and construction code enforcement. Check with your local structural engineer for all the specifics on your project

*LET YOUR DREAM PROJECT COME TRUE
WITH*

 **NATURAL**
STONE
VENEER **COM**



+1 888.558.7774



+1 702.558.7776



Contact@naturalstoneveneer.com



www.NaturalStoneVeneer.com



2000 E Maule Ave, Las Vegas, NV 89119 USA



Natural Stone Veneer



Natural Stone Veneer



Naturalstoneveneer



Naturalstoneveneer



Naturalstoneveneer1@gmail.com



NaturalStoneVeneer